

TAKE FREE

# Fuchu, Tokyo

## Visitor Guide

Instagram

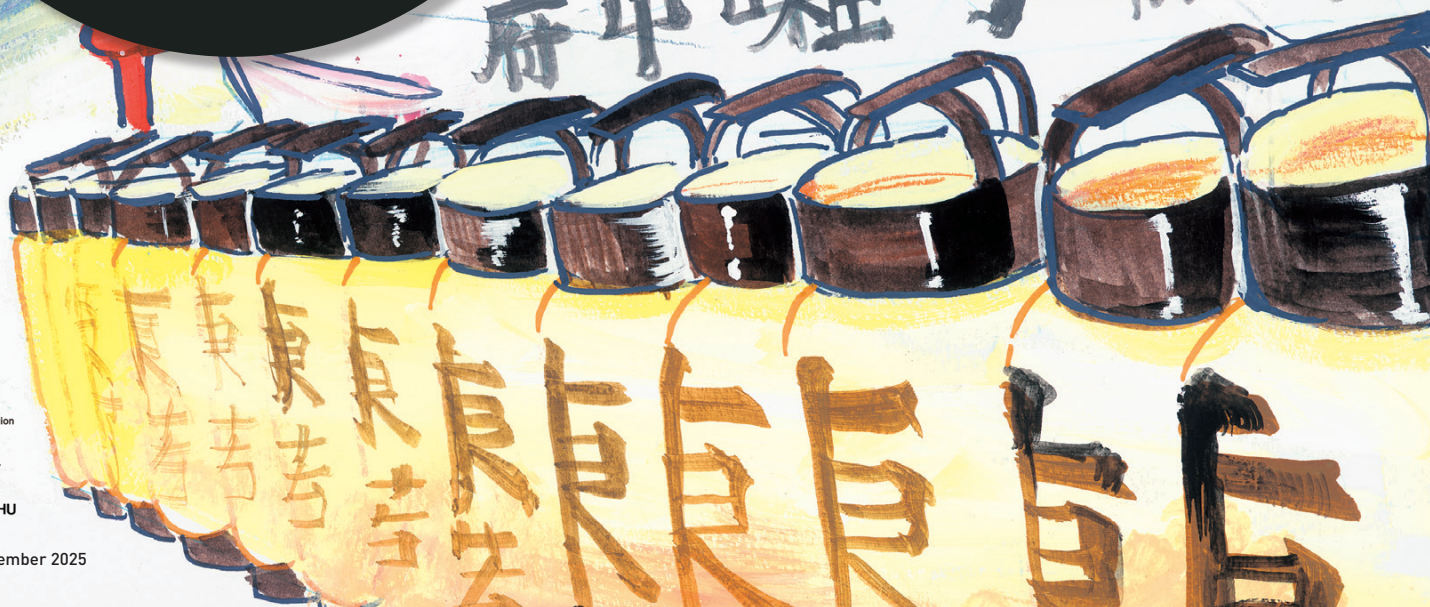


website



Discover the charm of **Fuchu City** – rich in greenery and history, and located in the heart of Tokyo metropolis, Japan.  
This pamphlet also features an original manga by **Paru Itagaki**, official Fuchu Ambassador of Musashi Province.

府中嚙子保存



Fuchu Tourism Association



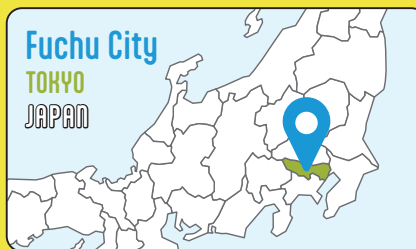
CITY  
OF  
FUCHU



# What Makes Fuchu City Special



Discover the must-visit shops, facilities, and souvenirs that showcase the charm and culture of Fuchu City. Let Fuchu surprise you with its diverse attractions and local flavor.



## Access

●From Shinjuku Station (Keio Line) to Fuchu Station (Keio Line)  
25 minutes via the Keio Line Special Express  
●From Tokyo Station (JR Line) to Fuchu Station (Keio Line)  
Take the JR Chuo Line from Tokyo Station to Shinjuku Station (15 minutes), then transfer to the Keio Line and ride the Special Express for 25 minutes.

## Sakaza Nakakyu-Honten

Founded in 1860, this long-standing liquor store offers a wide variety of renowned Japanese sake from across the country. From locally brewed sake to shochu and fruit liqueurs, the selection is impressive.

Address: 4-2-1 Miyunishi-cho, Fuchu City Hours: 10:00 a.m. - 8:00 p.m. (until 7:00 p.m. on holidays), Sundays: Noon - 6:00 p.m. Closed on: irregular holidays TEL: 042-362-2117 Access: 5-minute walk from Fuchuhonmachi Station (JR Line) or Fuchu Station (Keio Line)



## KOUZURU

Delicate and refined, this sake brings the true flavor of rice to life.



The pillars of Musashi Provincial Office



## Aokiya Fuchu Keyaki Namiki Street Store

A long-standing confectioner established in 1893, with 13 locations across Tokyo.

Address: 1F Foris, 1-41-1 Miyamachi, Fuchu City Hours: 10:00 a.m. - 8:00 p.m. Closed: check Foris Mall schedule TEL: 042-362-3006 Access: 3-minute walk from Fuchu Station (Keio Line)

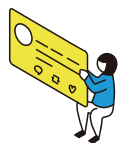
## Musashino Nisshi

Known for palm-sized baumkuchen roll cakes filled with cream—from just 200 yen each.



Sweets & Sake

## Facilities & Shops



## Kyodo-no-Mori Tourism and Products Center

Located next to the Fuchu Municipal Museum KYODONOMORI, this center features a direct-sales shop, a tourist information desk, and a restaurant—a convenient stop for visitors.

Address: 6-32-10 Koremasa, Fuchu City Hours: 10:00 a.m. - 6:00 p.m. (hours may vary by season) Closed on: Mondays (or the following day if Monday is a public holiday), New Year's holidays, and others TEL: 042-302-4000 Access: 20-minute walk from Bubaigawara Station (JR and Keio Lines)



## JRA Tokyo Racecourse (horse race track)

Home to many major horse races throughout the year. The Fuji View Stand, offering panoramic views of Mt. Fuji, is a crowd favorite.

Address: 1-1 Hiyoshi-cho, Fuchu City Hours: 9:00 a.m. - 5:00 p.m. (on race days), 9:10 a.m. - 5:00 p.m. (Park Wins), 10:00 a.m. - noon/1:00 p.m. - 4:00 p.m. (weekdays) Closed on: Mondays, Tuesdays, national holidays, New Year's holidays, and others Admission: 200 yen on race days (free for children under 15) TEL: 042-363-3141 Access: 2-minute walk from Fuchukeiba-seimonmae Station (Keio Line)



Photo: JRA



## Suzukiya

Located just west of Okunitama-jinja Shrine, this festival goods store has over 100 years of history. Suzukiya offers a wide selection of traditional items essential for local festivals, including hanten coats, hand towels, and masks. Don't miss the Hyottoko statue at the entrance; it's a local landmark!

Address: 1-11-2 Honmachi, Fuchu City Hours: 10:00 a.m. - 5:00 p.m. Closed on: Wednesdays and Thursdays TEL: 042-361-9346 Access: 5-minute walk from Fuchuhonmachi Station (JR Line) or Fuchu Station (Keio Line)



Hyottoko



## Monamour Seifudo

This patisserie is located right next to Okunitama-jinja Shrine. Originally opened as a Japanese confectionery shop in 1868, it now offers cakes and baked goods crafted by a pastry chef trained in Paris.

Address: 2-1-1 Miyamachi, Fuchu City Hours: 10:00 a.m. - 9:00 p.m. (until 10:00 p.m. on Saturdays, Sundays, and national holidays) Closed: Open year-round TEL: 042-361-9774 Access: 3-minute walk from Fuchu Station (Keio Line)



## Komaya Tabi Shop

A specialty store for festival goods founded during the Taisho era (1912-1926). From Kurayami Festival merchandise to traditional happi coats and tabi socks, it's a beloved part of Fuchu's festive spirit.

Address: 1-3-13 Hachiman-cho, Fuchu City Hours: 9:00 a.m. - 7:00 p.m. (summer), 9:00 a.m. - 5:00 p.m. (winter) Closed on: Tuesdays TEL: 042-361-8990 Access: 5-minute walk from Fuchu Station (Keio Line)



## Suntory Tokyo-Musashino Brewery

Tour the beer production facilities and enjoy a tasting of The Premium Malt's. A popular destination for beer enthusiasts.

Address: 3-1 Yazaki-cho, Fuchu City Hours: 9:30 a.m. - 5:00 p.m. Closed: New Year's holidays, factory holidays, and others TEL: 042-360-9591 Access: 15-minute walk from Fuchuhonmachi Station (JR Line)





# Plants

Late March to early April

## Cherry Blossoms in Fuchu City

While cherry blossoms can be seen throughout Fuchu City, these two spots offer a unique viewing experience.

## Weeping Cherry Blossoms

@Okunitama-jinja Shrine

The weeping cherry tree at Okunitama-jinja Shrine blooms a bit earlier than the typical cherry blossoms, making it one of spring's highlights. Its graceful branches are stunning by day and even more magical when illuminated at night.

## Cherry Blossoms

@ Fuchu Municipal Museum KYODONOMORI

This restored elementary school, built in 1935 and the largest in the area, is particularly striking in spring, with its pale pink facade complemented by blooming cherry trees.



## Fuchu Municipal Museum KYODONOMORI

Enjoy seasonal flowers and historic buildings across the expansive grounds. You can also immerse yourself in history and culture through activities such as drinking matcha tea in a traditional tea room.

Address: 6-32 Minami-cho, Fuchu City  
TEL: 042-368-7921 Hours: 9:00 a.m. - 5:00 p.m. (last entry at 4:00 p.m.) Closed on: Mondays (or the following day if Monday is a public holiday)  
Access: 20-minute walk from Bubaigawara Station (JR and Keio Lines)



Late May to early July

## Hydrangeas

Roughly 10,000 hydrangeas bloom alongside traditional Japanese buildings like merchant houses and a watermill.



Early February to mid-March

## Plum Blossoms

Fuchu's symbolic flower. Around 1,300 blossoms from 120 plum varieties fill the garden with color. The illuminated plum grove offers a dreamlike spectacle.



Mid-September to early October

## Red Spider Lilies

About 400,000 red spider lilies bloom across the park and during this period, the area comes alive with workshops, taiko drum performances, street acts, and more.



Mid-November to mid-December

## Autumn Leaves

In autumn, the garden's trees blaze with yellow and red. The vivid contrast between the bright red maples and the white spray of Momiji Falls is especially beautiful.



# Seasonal Plants & Festivals

# Festivals

April 30 - May 6

## Kurayami Festival

This traditional festival, held for over 1,000 years, features 22 dashi festival floats performing traditional Japanese music, six towering 2-3 meter taiko drums, and eight dazzling mikoshi (portable shrines) parading through the city center from May 3 to 6.



## Okunitama-jinja Shrine

One of Tokyo's five major shrines, founded in 111. As the head shrine of the ancient Musashi Province, it has long been admired throughout the Kanto region.



Address: 3-1 Miyamachi, Fuchu City Hours: April 1 - September 14: 6:00 a.m. - 5:00 p.m., September 15 - March 31: 6:30 a.m. - 5:00 p.m. (Shrine Office)  
Closed: Open year-round TEL: 042-362-2130  
Access: 5-minute walk from Fuchuhonmachi Station (JR Line) or Fuchu Station (Keio Line)



July 20

## Plum Festival

On festival days, a variety of festival stalls, including those selling plums, line the shrine grounds. Crow fans (karasu uchiwa), believed to bring bountiful harvests, ward off epidemics, and repel evil, are available exclusively on this day.



August 1

## Hassaku Sumo Festival

A votive sumo tournament, held over 400 times, prays for abundant harvests and peace. Hassaku is an abbreviation of Hachigatsu Sakujitsu, which means "the first day of August."



The days of the rooster in the Chinese lunar calendar in November

## Otori Shrine Festival (Tori no Ichi)

Held on the day of the rooster (tori) in November, this vibrant festival is one of Tokyo's three major Tori no Ichi Festival spots. People gather to purchase decorative rakes for good fortune.



September 27 & 28

## Autumn Festival: Chestnut Festival

In the evening, shrine maidens light the lanterns along the approach to the shrine, surrounded by stalls selling chestnuts and other treats. Visitors can enjoy Kagura (sacred dance) and Kyogen (comic theater) performances as well as live performance of traditional Japanese music, all offered free of charge.



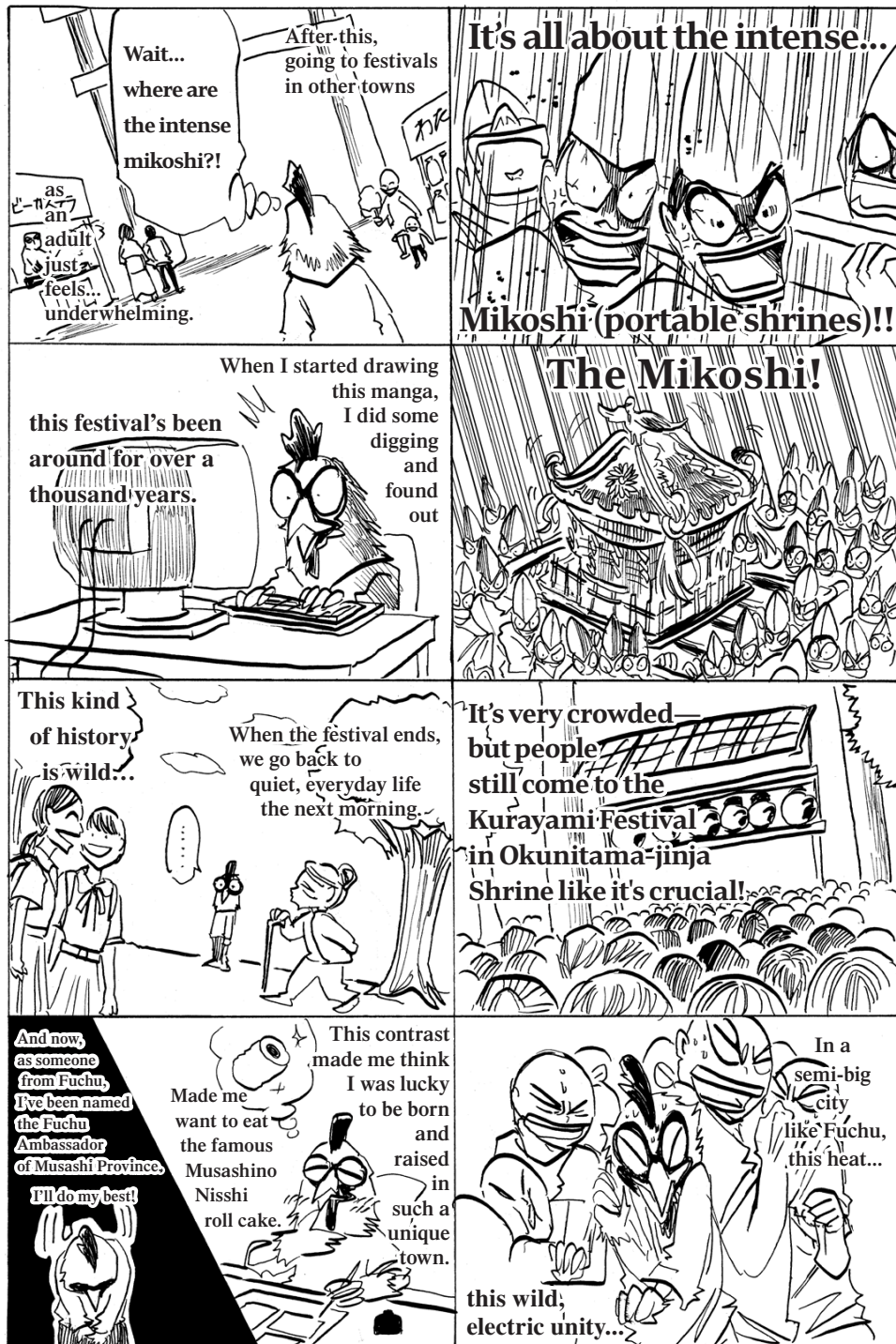
## Yatai (Festival Stalls)

Yatai are mobile food stalls commonly seen at Japanese festivals. Enjoy local treats like takoyaki and yakisoba, along with traditional games such as goldfish scooping and shooting galleries—a festive experience beloved by all ages. During its many festivals, the grounds of Okunitama-jinja Shrine are lined with bustling yatai (festival stalls).



\* Please note that the information provided is current as of August 2025 and may change without notice. Make sure to check for up-to-date information before you visit.  
\* The best viewing times for flowers may vary depending on the weather.  
\* All prices include tax. \* Estimated times are for reference only.





## Paru Itagaki, Manga Artist

Paru Itagaki, originally from Fuchu City, Tokyo, made her debut in "Weekly Shonen Champion" in 2016. Her first serialized work, *BEASTARS*, gained widespread acclaim, earning numerous awards and later being adapted into an anime. She is currently serializing *Taika no Risei* and *Ushimitsu Gao* in "Weekly Shonen Champion" and "Champion Cross". In 2024, she became the Fuchu Ambassador of Musashi Province.

## Paru Itagaki's

### "Speaking of Fuchu...!"

—A City of Surprises and Serenity

