

# Tama River Flood Evacuation Map

The "Tama River Flood Evacuation Map" is a map showing the area and the height to which the floodwater is expected to reach in the event of Tama River flooding. The magnitude of flooding is based on the assumptions made in the "Tama River Inundation Assumption Area Map."

## Evacuation Shelters in the Event of Tama River Flooding

Evacuation shelters set up by Fuchu City Three types of evacuation shelters have been set up.

### Shelter for Evacuees on Foot

This shelter is not accessible by car.  
 \* Because evacuation shelters have limited capacity, please look up multiple shelters and evacuation routes in advance.  
 \* Evacuating on foot can be dangerous when wind and rain become strong. Please start your evacuation early.

Evacuation center name	Address	Evacuation center name	Address	Evacuation center name	Address
Fuchu Elementary School No.1	2-6, Kotobukicho	Honshuku Elementary School	4-19, Honshukuchō	Shiraitodai Gymnasium	1-50, Shiraitodai
Fuchu Elementary School No.2	1-29, Midoricho	Fuchu Junior High School No.2	1-23, Momijigaoka	Sakaecho Gymnasium	1-1, Sakaecho
Fuchu Elementary School No.4	1-58, Shiraitodai	Fuchu Junior High School No.4	2-13, Miyosichō	Honshuku Gymnasium	4-23, Honshukuchō
Shiraitodai Elementary School	2-16, Shiraitodai	Fuchu Junior High School No.10	4-21, Nishifuchō		
Wakamatsu Elementary School	3-11, Wakamatsuchō	Sengen Junior High School	1-1, Sengencho		

### Shelters for Evacuees With Special Needs

The elderly, those with disabilities, expectant/nursing mothers, and others who require special care can use the facility together with accompanying persons.  
 \* Medical care is not available.

Evacuation center name	Address	Dedicated parking space
Chuo Community Center	2-25, Fuchuchō	Fuchu Park(2-26, Fuchuchō)
Shiraitodai Community Center	1-60, Shiraitodai	Fuchu Elementary School No.4(1-58, Shiraitodai)
Musashidai Community Center	2-2, Musashidai	Musashidai Children's Baseball Field(2-2, Musashidai)
Shinmachi Community Center	1-66, Shinmachi	Fuchu Junior High School No.5(2-44, Shinmachi)
Momijigaoka Community Center	2-1, Momijigaoka	Fuchu Junior High School No.2(1-23, Momijigaoka)
Katamachi Community Center	2-17, Katamachi	Katamachi Dai-san Park(2-17, Katamachi)
Lumiere Fuchu	2-24, Fuchuchō	Underground parking
Fuchu Continuing Education Center	1-7, Sengencho	Underground parking

### Shelters That Accommodate Vehicles

\* Only intended for early evacuation due to the possibility of being caught up in flood during vehicle evacuation.  
 \* Pay special attention to the health of yourself and your family while residing in a vehicle.

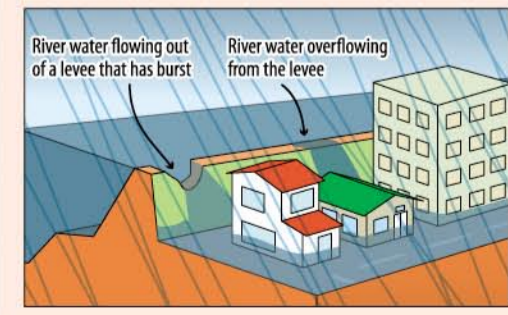
Evacuation center name	Address	Evacuation center name	Address
Fuchu Elementary School No.6	4-14, Tenjincho	Shinmachi Elementary School	1-25, Shinmachi
Fuchu Elementary School No.7	2-23, Kitayamachō	Fuchu Junior High School No.1	1-22, Saiwaichō
Fuchu Elementary School No.9	3-7, Sakaecho	Fuchu Junior High School No.5	2-44, Shinmachi
Musashidai Elementary School	2-3, Musashidai	Fuchu Junior High School No.7	2-4, Musashidai

### Organizations and Facilities That Have Signed Support Agreement

- Depending on the situation, the city may request the opening of these sites to evacuees following the opening of city-run shelters (Shelters for Evacuees on Foot, Shelters for Evacuees With Special Needs, and Shelters That Accommodate Vehicles).
- There are also shelters for those with disabilities and expectant/nursing mothers.
- The opening of shelters will be announced on Fuchu City's website as well as the VACAN website.

### What is Outside Water Flood

Outside Water Flood (flooding) is a phenomenon that occurs when water overflows from a swollen river. Water may flow into an area in a short time due to a levee that has burst, causing inundation damage.



### Tama River Flood Inundation Assumption Area Map (largest assumed scale)

This map is based on the flood inundation area map for the Tama, Asa, and Oguri Rivers (assuming maximum extent) published by the Ministry of Land, Infrastructure, Transport and Tourism, and shows the assumed flooding of the Tama River caused by typhoons or heavy rain.

What is the "Flood Inundation Assumption Area (largest assumed scale)"?  
 Assumes Tama River's flood caused by the record heavy rain in the same area where the rain falls the similar way (total rainfall of 588mm in 48 hours in the Tama River basin).

Main producer: MLT Kanto Regional Development Bureau, Keihin Rivers Office  
 Production date: May 30, 2016  
 \* For more information on the "Tama River System Inundation Assumption Area Map," please contact us using the details below:  
 MLT Kanto Regional Development Bureau, Keihin Rivers Office Phone: 045-503-4000

## Evacuation Decision-Making Flowchart

The "Evacuation Decision-Making Flowchart" helps you to consider and determine "when" and "where" to evacuate if the risk of the Tama River flooding increases. You should consider the timing of evacuation and destination shelter by taking into consideration the depth of flooding in your area, your family structure, and whether or not you have relatives or acquaintances you can stay with.

Note that the "Evacuation Decision-Making Flowchart" is just an example for your reference. Immediately begin your evacuation if you sense danger.

Try to locate your home on the colored map by marking it.

Is your home located on the colored map?  
 Colored areas are the Inundation Assumption Area, Assumed Area of Building Collapse and Flood (Overflow/Bank Erosion), and Landslide Disaster (Special) Warning Zone.  
 \* See legend at right

Since there is a risk of damage, evacuation from a building (horizontal evacuation) is required.

Will you or those evacuating with you require extra time to evacuate?

Do you have relatives or acquaintances who live in a safe area?

Take shelter at the homes of relatives or acquaintances before train and bus services are suspended.  
 If Alert Level 3 (Evacuation for the elderly, etc.) is issued, evacuate to the homes of relatives and acquaintances.  
 \* Consult with your relatives and acquaintances regularly

Consider using hotels and inns as evacuation sites.  
 Reservations and confirmation are required in advance.  
 Start evacuating when the notice of the opening of voluntary evacuation shelters is announced.  
 If Alert Level 3 (Evacuation for the elderly, etc.) is issued, evacuate to a shelter designated by Fuchu City.

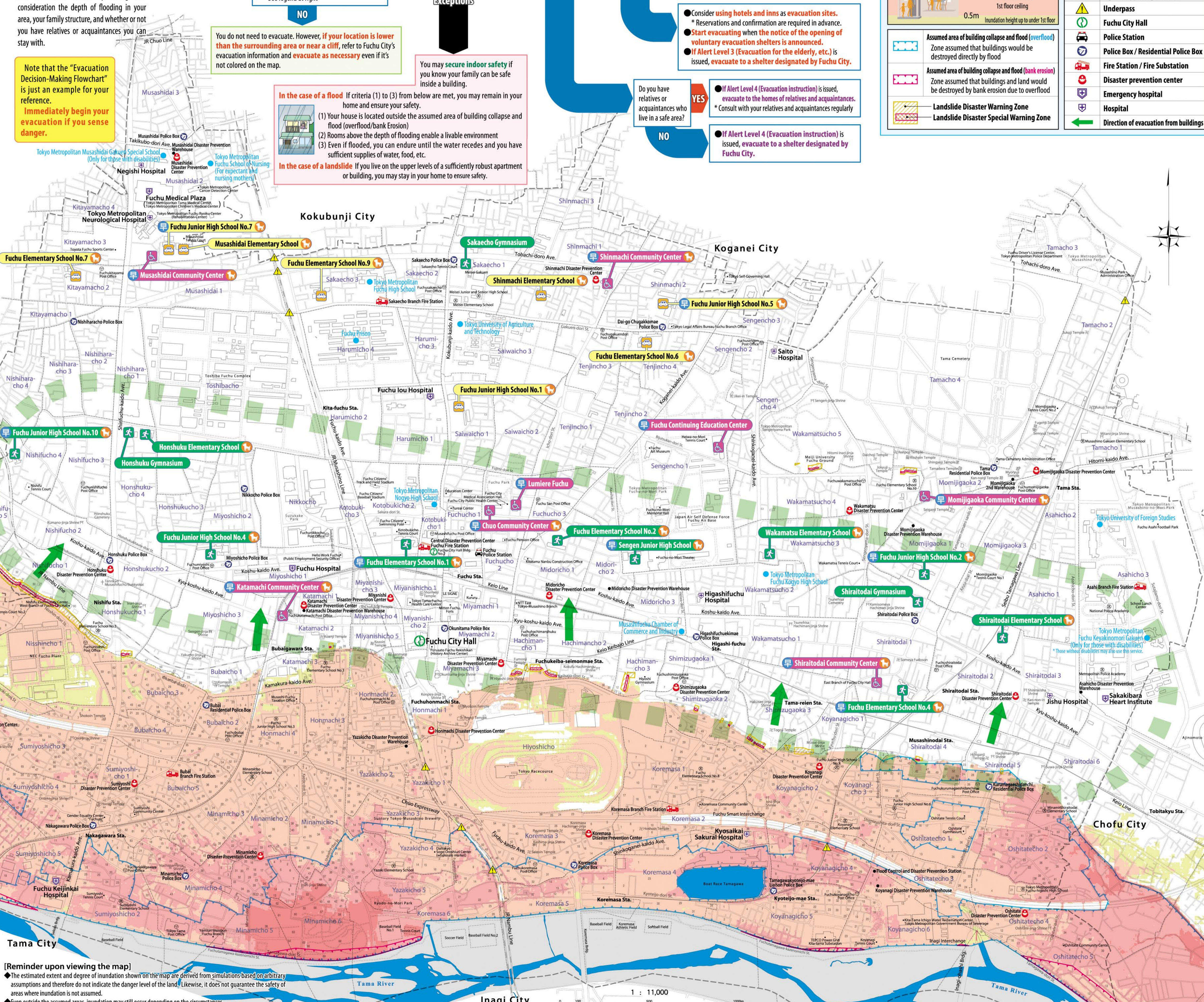
If Alert Level 4 (Evacuation instruction) is issued, evacuate to the homes of relatives and acquaintances.  
 \* Consult with your relatives and acquaintances regularly

If Alert Level 4 (Evacuation instruction) is issued, evacuate to a shelter designated by Fuchu City.

You do not need to evacuate. However, if your location is lower than the surrounding area or near a cliff, refer to Fuchu City's evacuation information and evacuate as necessary even if it's not colored on the map.

You may secure indoor safety if you know your family can be safe inside a building.

In the case of a flood If criteria (1) to (3) from below are met, you may remain in your home and ensure your safety.  
 (1) Your house is located outside the assumed area of building collapse and flood (overflow/bank erosion)  
 (2) Rooms above the depth of flooding enable a livable environment  
 (3) Even if flooded, you can endure until the water recedes and you have sufficient supplies of water, food, etc.  
 In the case of a landslide If you live on the upper levels of a sufficiently robust apartment or building, you may stay in your home to ensure safety.



## Legend

Inundation Height Color Guide	Inundation Height	Approx. Water Depth
Red	5.0m	Inundation height up to 2nd floor ceiling or higher
Orange	3.0m	Inundation height between 1st floor ceiling and close to 2nd floor ceiling
Yellow	0.5m	Inundation height between 1st floor level and 1st floor ceiling
Green	0.5m	Inundation height up to under 1st floor

	Assumed area of building collapse and flood (overflow)	Zone assumed that buildings would be destroyed directly by flood
	Assumed area of building collapse and flood (bank erosion)	Zone assumed that buildings and land would be destroyed by bank erosion due to overflow
	Landslide Disaster Warning Zone	
	Landslide Disaster Special Warning Zone	

	Shelter for Evacuees on Foot
	Shelters for Evacuees With Special Needs
	Shelters That Accommodate Vehicles
	Voluntary Evacuation Shelters (Early Open Shelters)
	Shelters That Allow Pets
	Organizations and Facilities That Have Signed Support Agreement
	Underpass
	Fuchu City Hall
	Police Station
	Police Box / Residential Police Box
	Fire Station / Fire Substation
	Disaster prevention center
	Emergency hospital
	Hospital
	Direction of evacuation from buildings

[Reminder upon viewing the map]  
 The estimated extent and degree of inundation shown on the map are derived from simulations based on arbitrary assumptions and therefore do not indicate the danger level of the land. Likewise, it does not guarantee the safety of areas where inundation is not assumed.  
 Even outside the assumed areas, inundation may still occur depending on the circumstances.  
 The estimated extent and degree of inundation may vary depending on rainfall, changes in the land formation, and the condition of rivers and sewage systems.